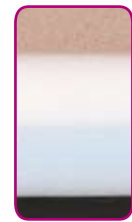


**Allen Surfaces Technology**

**No single foam provides effective pressure management...**



**Allen uses 4 foams for effective pressure management.** Optimal pressure management requires a pad that is effective in four main support functions: 1-conforming to the patient's body, 2-providing proper support, 3-prohibiting any bony prominences from bottoming out, and 4-evening out irregularities and gaps in the table surface.

No single foam can support all four functions effectively. Listed below are the 4 foams Allen has proven effective to provide optimal pressure management in a single pad.



**1. Memory Foam: Conforming layer**



**3. High Density Elastic Foam: Anti-bottoming layer**



**2. Low Density Elastic Foam: Support layer**



**4. Closed Cell Foam: Diaphragm layer**

*Neither the position of the patient, nor the time spent on the OR bed can be altered easily during surgery.*

*Varying the type of pressure-reducing mattress may be the most appropriate method to prevent pressure ulcers during the perioperative period.*

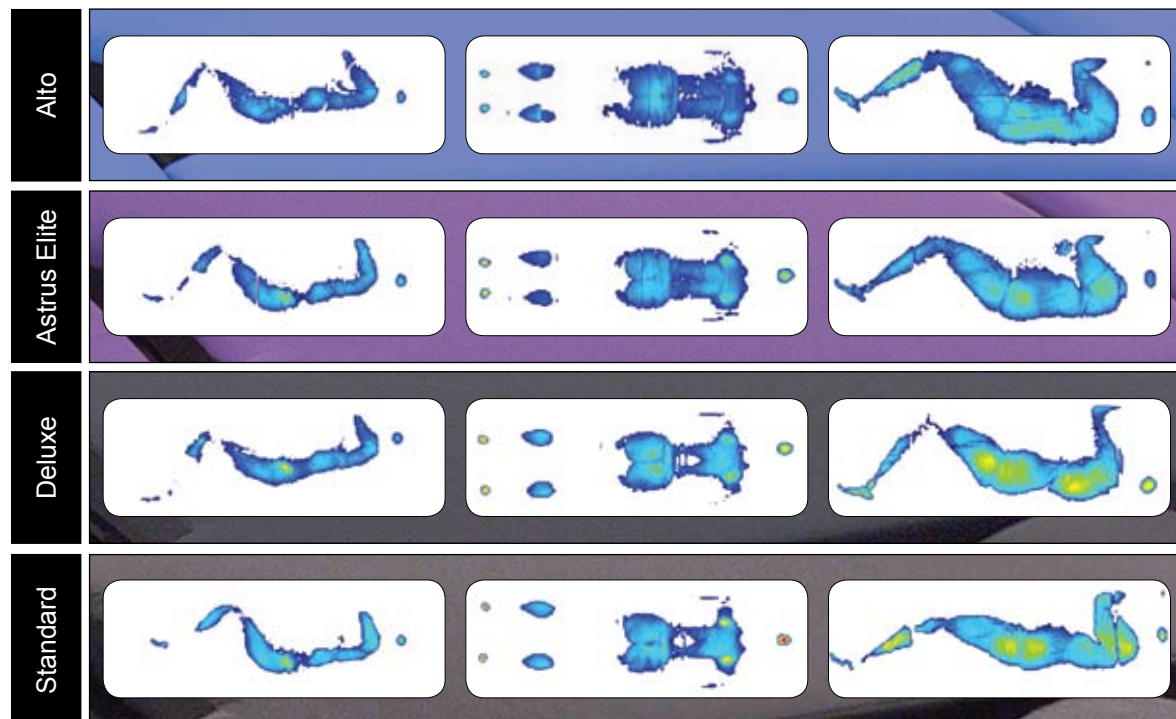
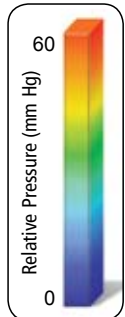
- Alexander's Care of the Patient in Surgery, 13th Edition

**Allen Perioperative Surfaces: Pressure Maps**

Model: Female  
Weight: 117 lbs. (53 kg)  
Height: 63" (160 cm)

Model: Male  
Weight: 180 lbs. (82 kg)  
Height: 68" (173 cm)

Model: Male  
Weight: 300 lbs. (136 kg)  
Height: 73" (185 cm)



**The Allen Pressure Management Solution**

**Allen pads contain multiple foam layers for optimal pressure management!**



**Alto Pad Cross-Section**



**Astrus Elite Pad Cross-Section**

**Alto Surface**

**Excellent Surface for All Surgical Positions** The Alto Surface is designed to offer superior pressure management in all surgical positions. Engineered, multi-layered and fully contoured, this surface allows bony prominences, or "landing gear," to be protected in the Pressure Reducing Zones while other parts of the body are supported and cradled. This support system decreases the high pressure that bony prominences usually experience. The foot section is constructed with calf support and special soft zone for heels. The Anti-Shear Cover protects patients' skin.

**Astrus Elite Surfaces**

**Effective Pressure Management** Our Astrus Elite™ Surface has a four-layer foam composite construction that protects patients four ways. A top layer of memory foam conforms to the patient while the underlying foam layers support the patient's weight and prevent bottoming out. Both the Astrus Elite and Astrus Elite Silver contain the same 4-layer advanced pad technology.

**Allen Surfaces Selector Chart**

		Foam Layers					Benefits				Pad Thickness								
		Specialty Layer	Conforming Layer	Support Layer	Anti-bottoming Layer	Diaphragm Layer	Velcro kit Included	Improved Pressure Management	Recommended For Long Surgeries	Anti-Shear Cover	2" (5 cm) Thickness	3" (7.6 cm) Thickness	3.25" (8.2 cm) Thickness	3.5" (9 cm) Thickness	4" (10 cm) Thickness	4.25" (10.8 cm) Thickness	5" (10 cm) Thickness	5.25" (13.3 cm) Thickness	
<b>Alto</b>	OR Table Surfaces	●	●	●	●	●	●	●	●	●									
	Armboard Surfaces	●	●	●	●	●		●	●	●				●					
<b>Astrus Elite &amp; Silver</b>	OR Table Surfaces		●	●	●	●	●	●	●	●			●					●	
	Armboard Surfaces		●	●	●	●		●	●	●			●	●	●	●	●	●	●
	Stretcher Surfaces		●	●	●	●		●	●	●				●					
<b>Standard &amp; Deluxe</b>	OR Table Surfaces			●			●												
	Armboard Surfaces			●									●	●			●		
	Stretcher Surfaces			●									●		●				